

COMMERCIAL / LAND & LOTS



211-213 N 2nd St. Rogers, AR
7660 SF 2 tenant comm. Building

Call Dana Proctor
479-409-5691
Coldwell Banker
Harris McHaney & Facette



778 Happy Hollow Rd
Fayetteville, AR
2110 SF Single Tenant
Office Facility on .85ac

Call Pat Morris
479-464-5950
Morrison, Wanger, Adams



Land & Lots

23 vacant lots -Wagon Wheel Road Springdale
Call Patrick Swope 479-717-1902



Letitia Street Greenland, AR
44.5 acres of undeveloped land
Call Gary Boyle with Lindsey & Associates 479-263-7727



14382 Fruitwood Road Gravette
Singlewide mobile home and 28.45 acres \$250,000

Call Patrick Swope
479-717-1902



* The red lines are approximations.

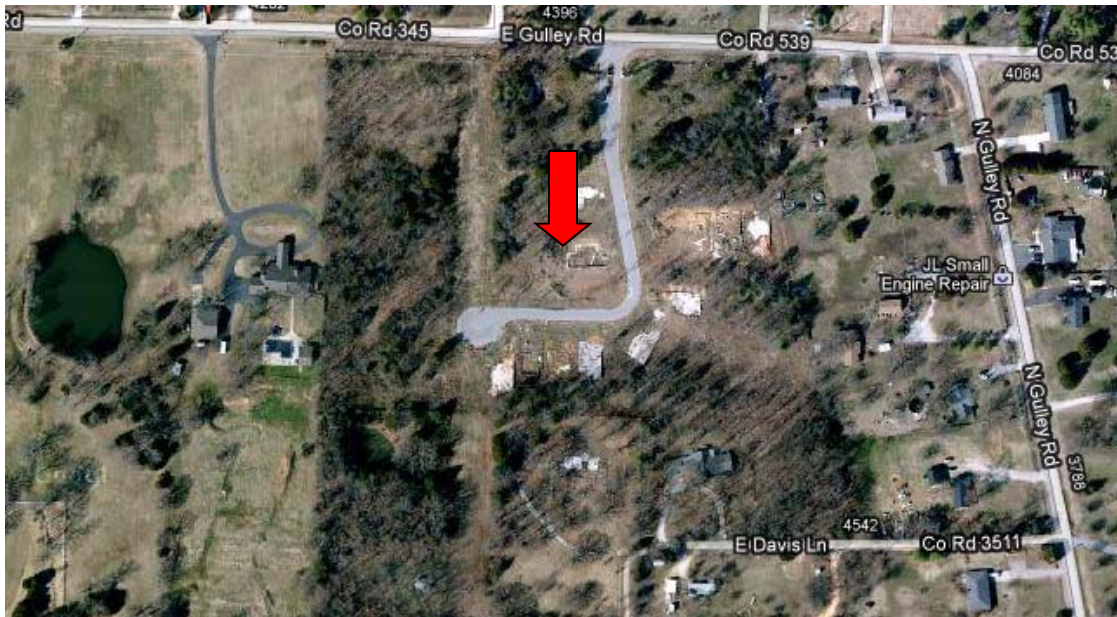
Grand Valley Subdivision Springdale, AR
165.12 acres-160 lots-19 acres comm.-76 acres future **Call Patrick Swope 479-717-1902**



The Hamptons Subdivision Fayetteville, AR
47.1 acres including 23.62 acres for additional phase **Call Patrick Swope 479-717-1902**



New Castle lots in Fayetteville, AR (1+acre each) **Call Patrick Swope 479-717-1902**



4 Duplex lots-Cooper Oaks Subdivision Centerteron, AR
Call Preston Cox 479-790-2874 \$27,600 per lot



106 acres zoned RPZ multi commercial residential –north of Sam’s Club Fayetteville



18 lots Joyce Street Fayetteville, AR



Other Lots

Call Patrick Swope at 479-717-1902

Lake lot on Pleasure Heights Road

Lot-Hwy 264 Lowell, AR

Lot 28 & 29 Timber Trails Subdivision Fayetteville, AR

Lot 30 & 31 Timber Trails Subdivision Fayetteville, AR